

ECONOMICAL SLAT

Cod. 0450002

Dimensions: 1.150 x 630 mm self-supporting
Weight: 3,5 kg
Load resistance: 200 kg/piece
Material: polypropylene copolymer UV stabilized, resistant to high temperatures
Standard colours: grey/black, white
Shipping capacity: 2.700 pieces per 20 ft cnt

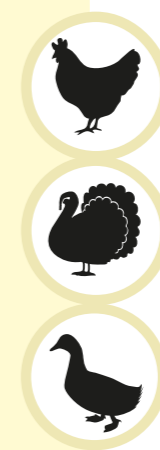
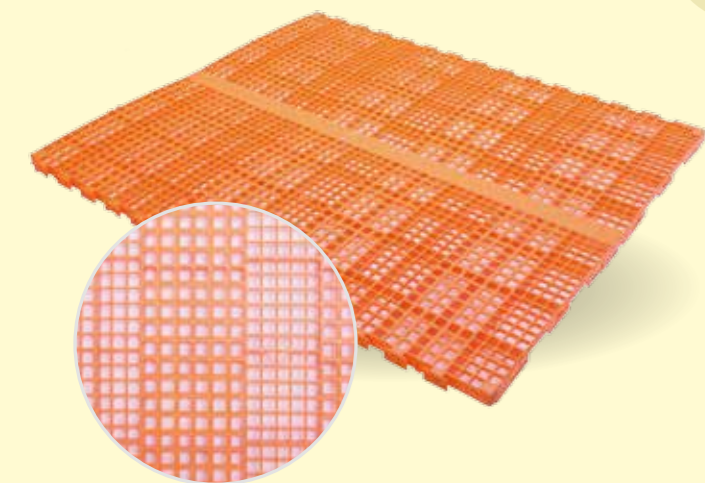
- The low cost, long term solution for your flocks
- Easy to assemble and to remove
- This slat must be screwed upon wooden beams having a minimum width of about 40 mm
- One support is needed each 630 mm



PALMY SLAT

Cod. 0450018

Dimensions: 1.200 x 1000 mm
Weight: 5,6 kg



SLATS

GIORDANO POULTRY PLAST S.p.A. reserves the right to modify products' features and data contained in this catalogue, and accepts no liability for errors and/or omissions in the published information



GIORDANO
POULTRY PLAST®

purely professional.

Giordano Poultry Plast S.p.A.

Via Bernezzo, 47
12023 CARAGLIO - Cuneo - Italy
Tel. +39 0171 61.97.15
Fax +39 0171 81.75.81
info@poultryplast.com

www.poultryplast.com

GIORDANO POULTRY PLAST

www.poultryplast.com

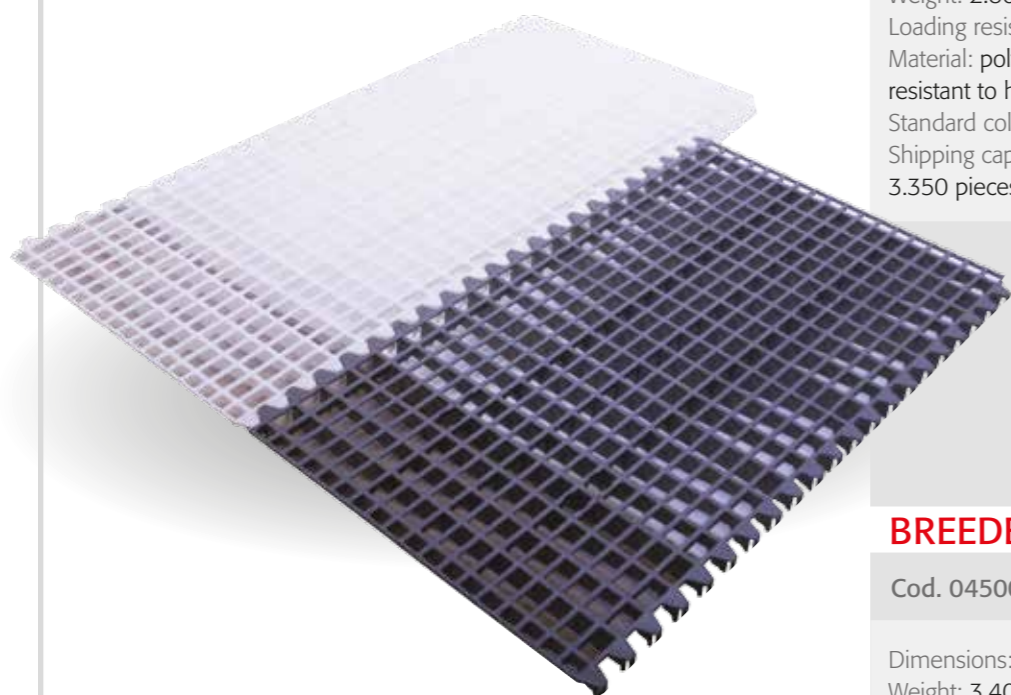




BREEDER SLAT 1000x600 mm

Cod. 0450006

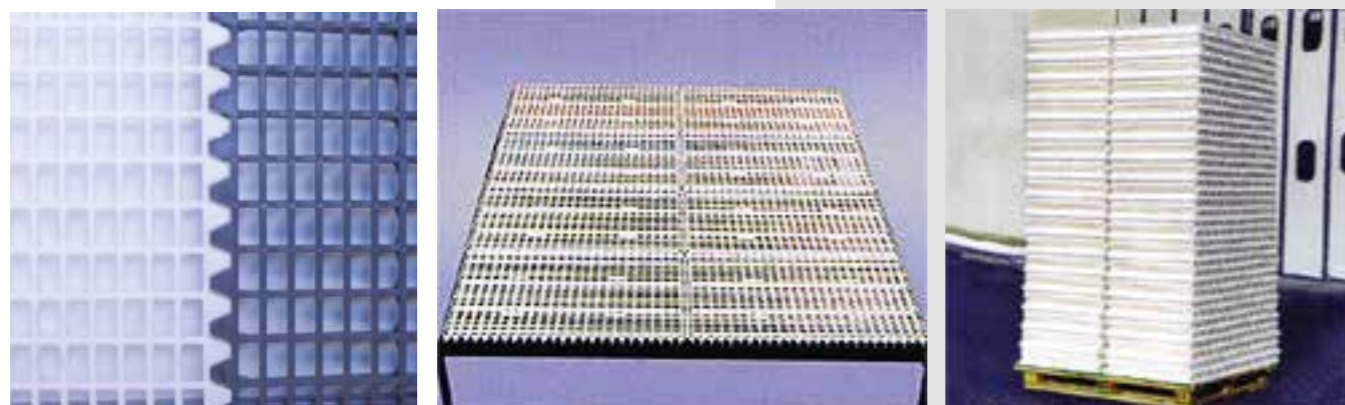
Dimensions: 1.000x600 mm
Weight: 2.800 kg
Loading resistance: 200 kg/piece
Material: polypropylene copolymer UV stabilized, resistant to high temperatures
Standard colours: white, grey
Shipping capacity: 1.500 pieces per 20 ft cnt
3.350 pieces per 40 hc cnt



BREEDER SLAT 1200x600 mm

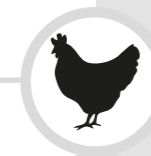
Cod. 0450005

Dimensions: 1.200x600 mm
Weight: 3.400 kg
Loading resistance: 200 kg/piece
Material: polypropylene copolymer UV stabilized, resistant to high temperatures
Standard colours: white, grey
Shipping capacity: 1.200 pieces per 20 ft cnt
3.000 pieces per 40 hc cnt



Ideal for use in poultry breeder houses. Easy to clean. Easy to join together. Easy to assemble and to remove. Due to its high load bearing resistance, it is possible to walk on the slats. Compact and high stacking- more slats per pallet saving on transport costs.

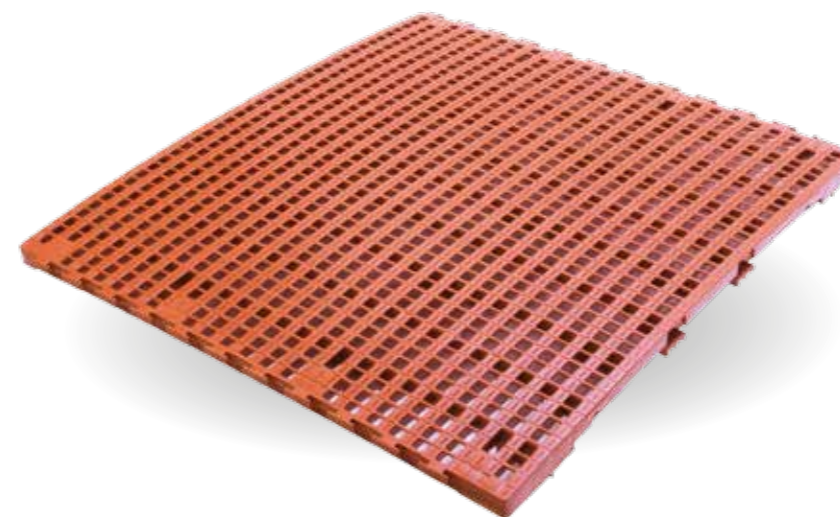
- Wholly plastic made
- More resistant, hygienical, comfortable, reliable
- Less maintenance costs
- Easy to assemble and to remove
- Must be supported each meter by means of its special plastic support having 4 feet available with heights from 200 to 500 mm
- It doesn't need any kind of fastening



GRINTA EVOLUTION SLAT

Cod. 0450001

Dimensions: 1.000x1.000 mm Self-supporting
Weight: 7.00 kg
Loading resistance: 400 kg/m2
Material: high density polyethylene UV stabilized, resistant to high and low temperatures
Standard colours: brown, grey
Shipping capacity per 20 ft cnt:
Nr. 500 slats without feet
Nr. 400 slats with feet H 200/300 mm
Nr. 350 slats with feet H 500 mm



AVAILABLE BROILER AND DUCK VERSIONS

FEET/SUPPORTS

Cod. 0450011

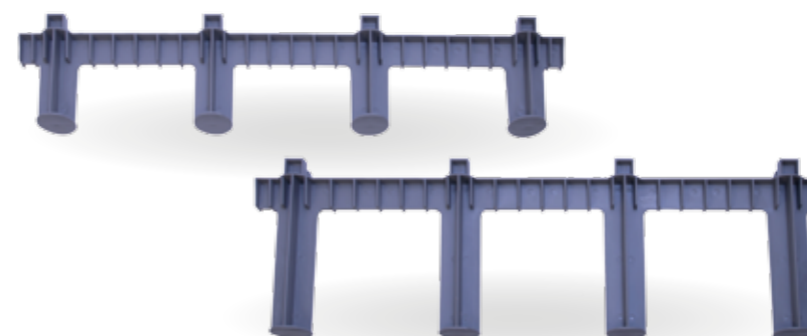
Dimensions: 1.000x200 mm

Cod. 0450010

Dimensions: 1.000x300 mm

Cod. 0450012

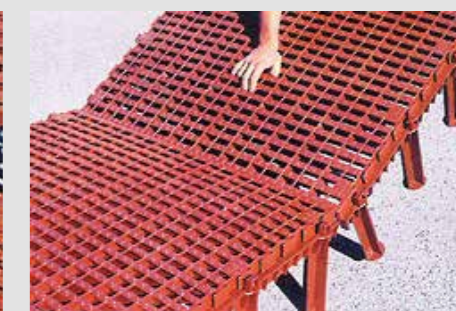
Dimensions: 1.000x500 mm



Feet/support's assembly



Detail of grid's assembly



View of the total assembly



View of the duck grid design



View of the broiler grid design