



# World's most reliable system

The global standard in egg transportation

**2000 - 2020**



## HISTORY

**In the year 2000 the EggsCargoSystem® (ECS) was invented. The reason was the modification of egg transportation from using metal roll containers and paper trays to using (wooden) pallets in combination with paper trays. As the stacks of paper key trays could not hold the weight of all above standing stacks, with the result of many damaged eggs, urged to find a better solution. The EggsCargoSystem® was born.**

What started in the year 2000 as a local Dutch innovation, to improve the transportation of shell egg, has after 20 years become the global standard.

The introduction of the EggsCargoSystem® is since recognised as an important game changer in the industry.

Today the EggsCargoSystem® is used for transportation of both chicken shell and hatching eggs. Besides, in the year 2018 ECS XL® was developed for transportation of duck and turkey eggs.

Last but not least, EggsCargoSystem Mini® was launched in the year 2019.

Based on the same idea as the traditional system, but on a much smaller footprint. Perfect for catering services and retailers.

## FIGURES AND DRIVERS

In the twenty years of existence over **250 million** EggsCargo Trays were sold in over 60 countries worldwide.

The EggsCargoSystem® is daily used by over **1.000 customers** globally.

Maximum egg protection, **< 3% cracked eggs**, more eggs in the same truck in combination with high performance automation are key drivers to choose for and work with the EggsCargoSystem®.

Due to the very long lifespan of the system and because it can be fully recycled at the end of its functional life, it makes it the **most sustainable** system available in the market.

EggsCargoSystem® is the only system in the world with an integrated RFID chip that makes **digital tracking and tracing** possible.

The EggsCargoSystem® can be provided with an additive which, after professional cleaning, reduces the risk of **contamination** to a minimum.

To personalize the EggsCargoSystem®, you can choose from almost all **RAL** colors and all parts can be provided with an **inscription**.

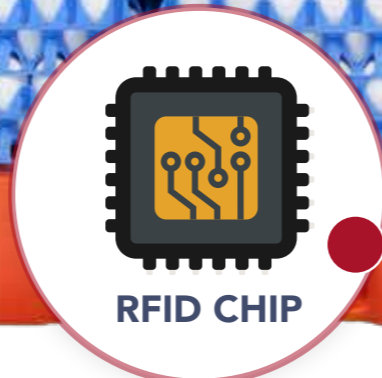
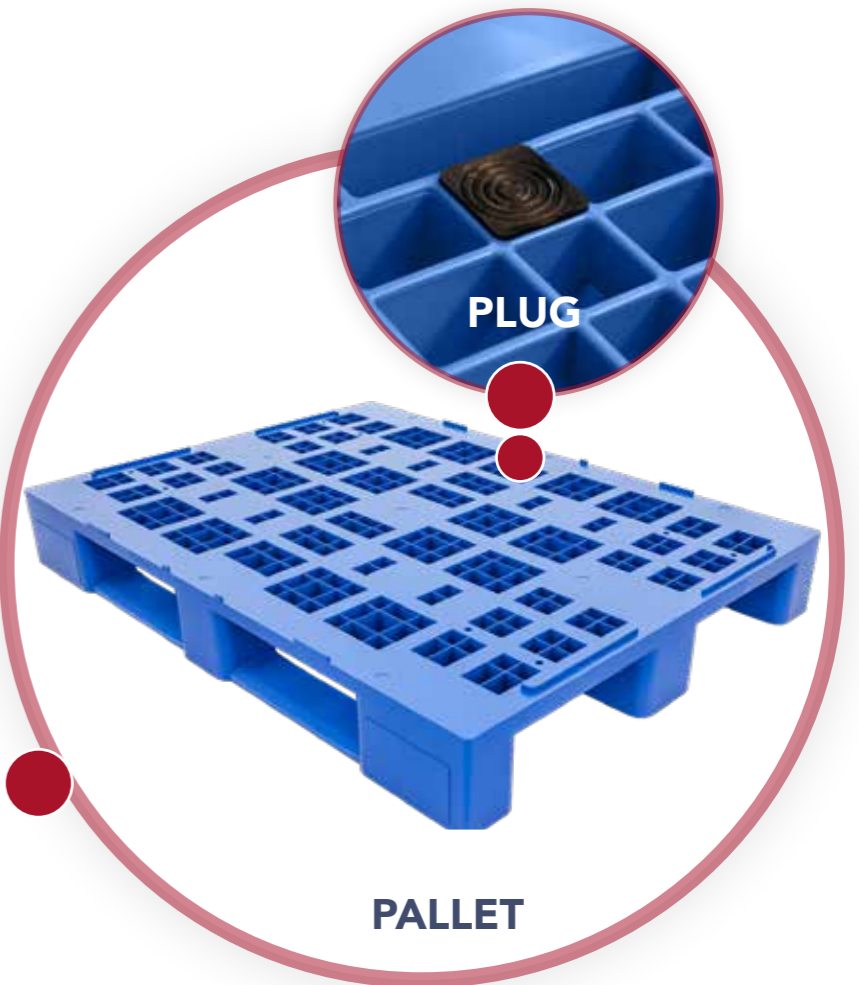
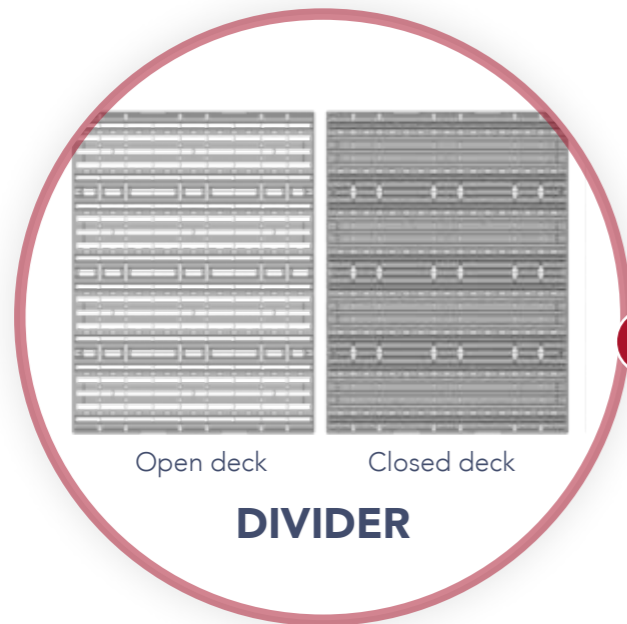
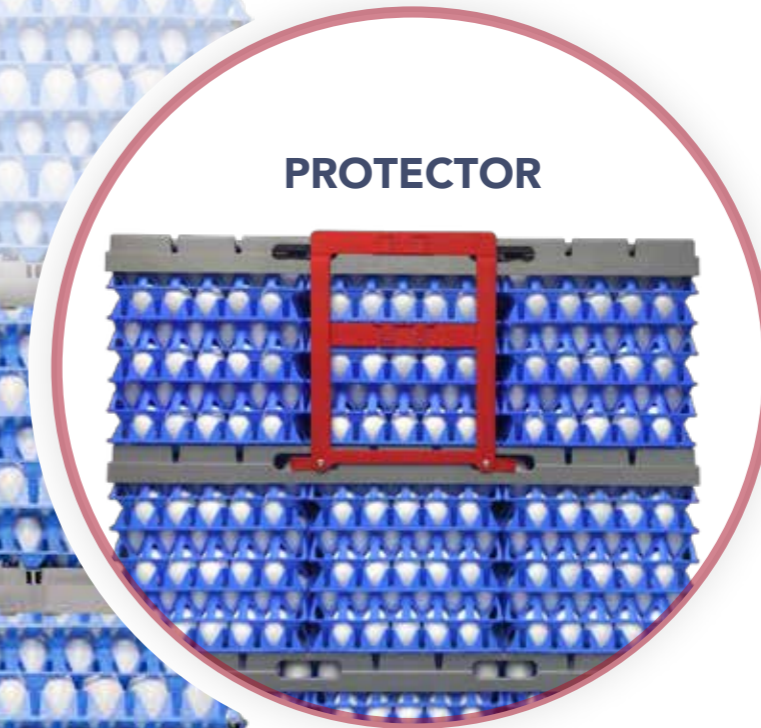
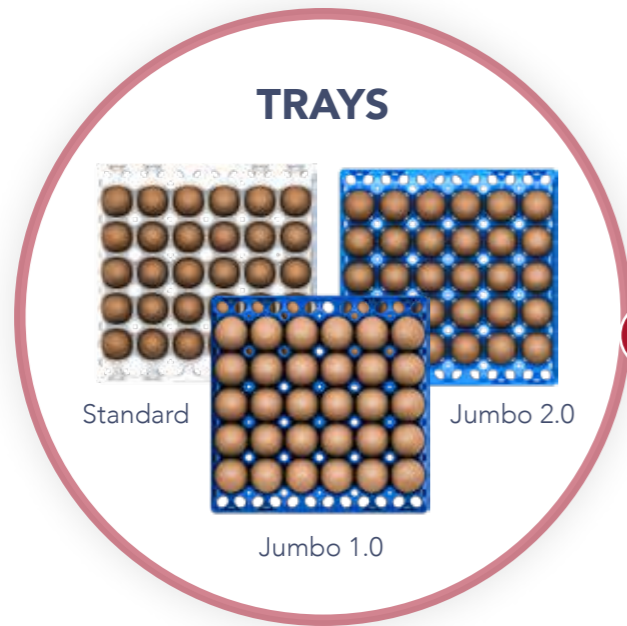


## THE PERFECT JOINT VENTURE

Between the EggsCargoSystem® and high-end professional grading, processing and washing equipment.



# THE EGGSCARGOSYSTEM®



# TRAY

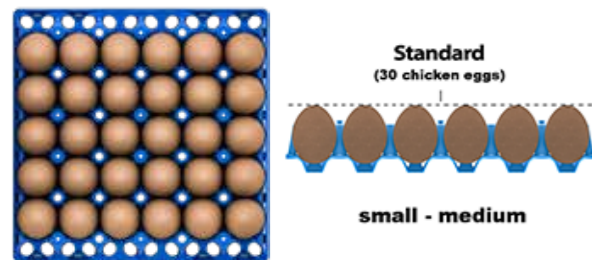
## TECHNICAL - ALL TRAYS

measurement	299 x 299 x 50 mm
measure tolerance	+ 1 mm / - 1 mm
net weight	0,144 kg
weight determination	weighted average of 100 trays
number per pallet	5.000 pcs

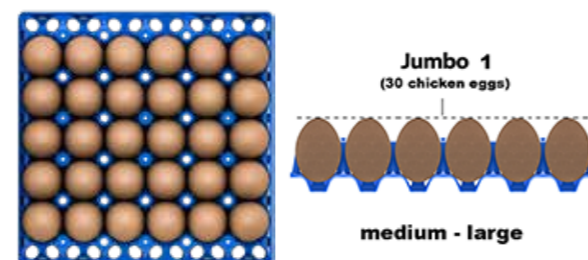
## EXTRA - ALL TRAYS

- for perfect recognition the trays can be provided with an inscription
- in almost all RAL-colours possible
- strong - durable - long life time
- nocks for perfect denesting
- high quality HDPE virgin material
- provided with UV stabilisation

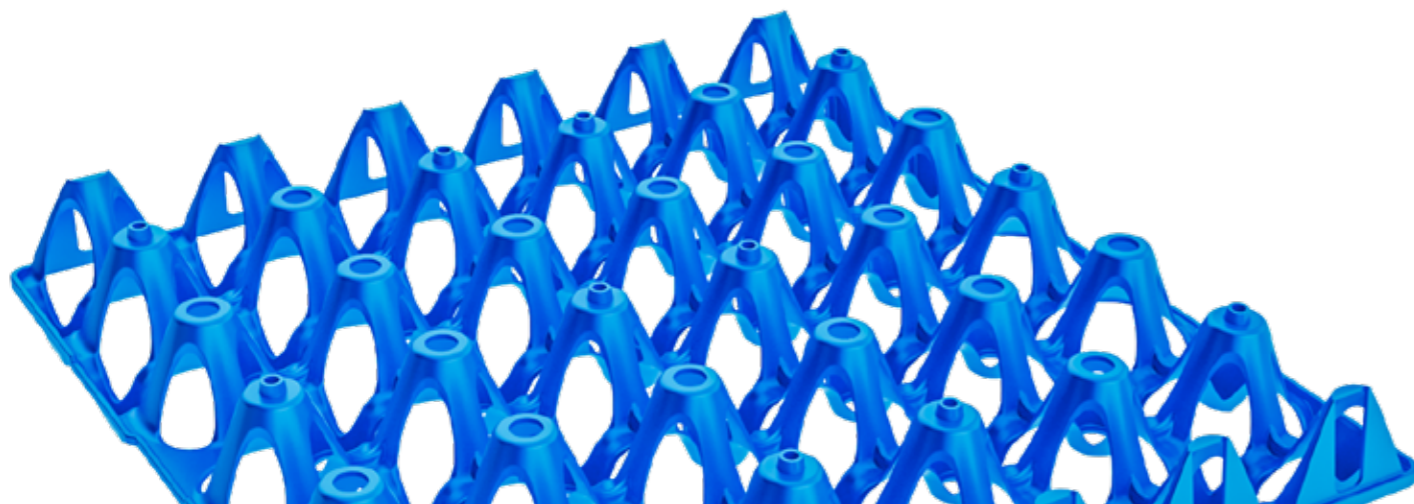
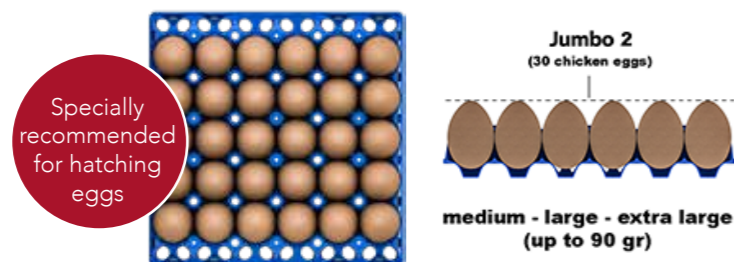
### STANDARD TRAY - 30 chicken eggs



### JUMBO 1 TRAY - 30 chicken eggs



### JUMBO 2 TRAY - 30 chicken eggs

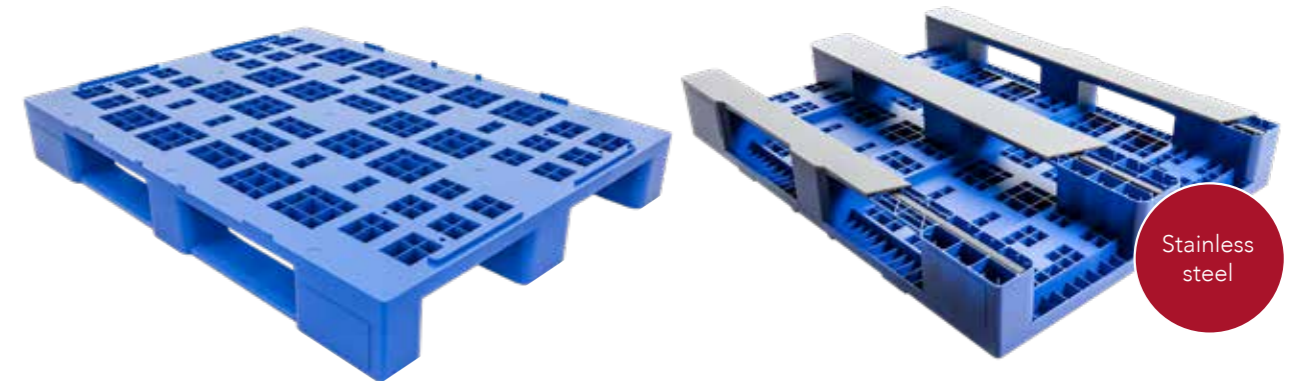


# PALLET

## PALLET NEW PLASTIC - WITH CLOSED FOOT



## PALLET NEW PLASTIC - RE-INFORCED (suitable for use in warehouse racks)



## TECHNICAL

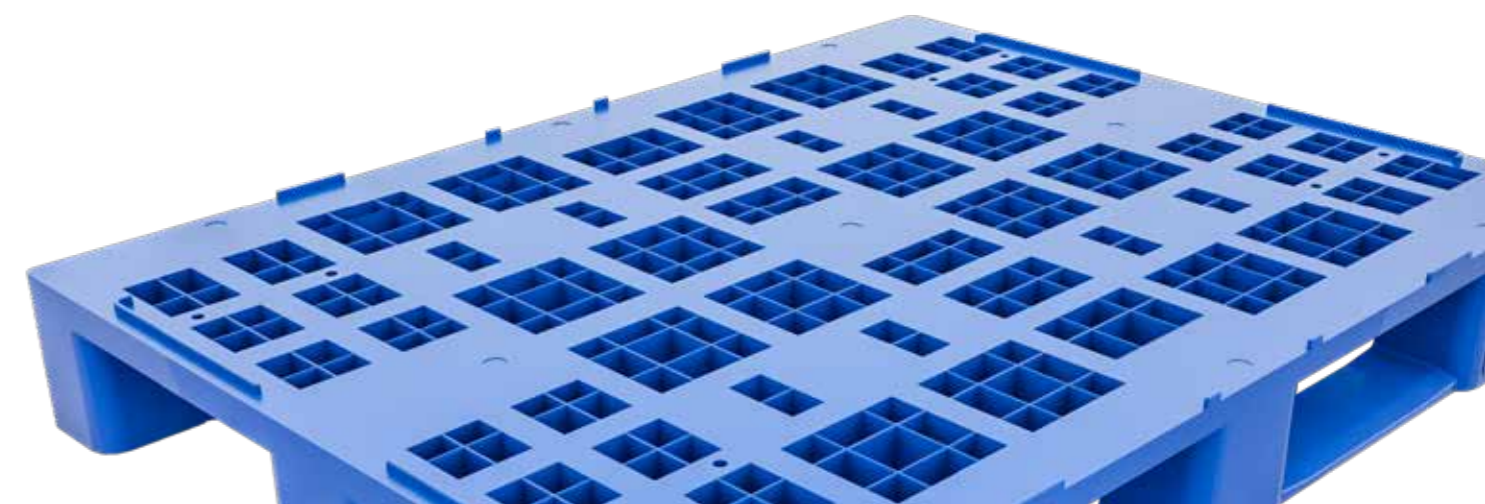
measurement	1200 x 900 x 160 mm
measure tolerance	+ 1 cm / - 1 cm
net weight (kg) - normal	17,2 kg
net weight (kg) - re-inforced	19,2 kg
weight tolerance (kg)	+ 0,3 kg / - 0,3 kg
number per stack	15 pcs
colour	almost all RAL-colours

## QUALITY:

- high quality HDPE virgin material
- RFID-chip for track & trace

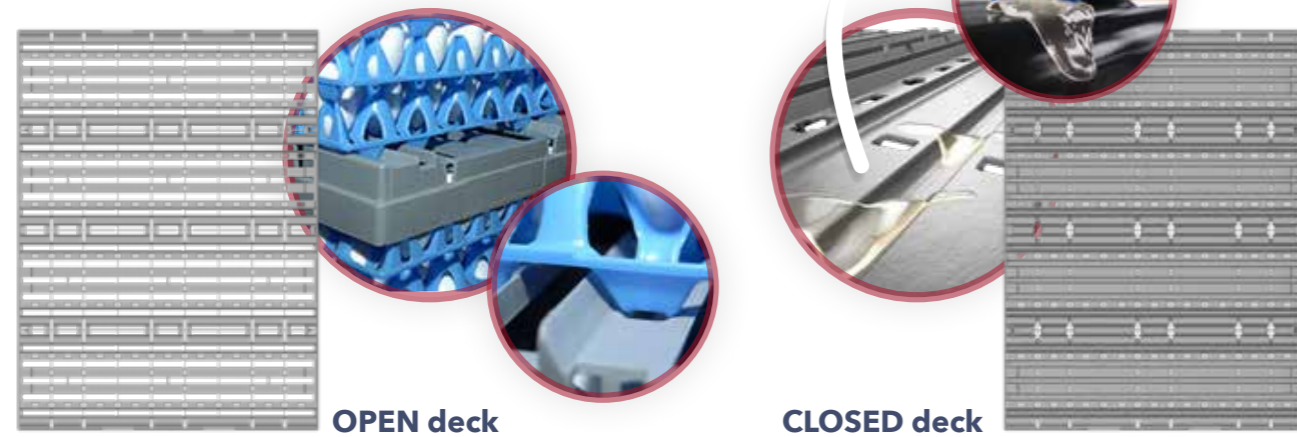
## EXTRA:

- for perfect recognition the pallets can be provided with an inscription
- strong - durable - long life time



# DIVIDER

## DIVIDER NEW PLASTIC



TECHNICAL OPEN & CLOSED DECK	
measurement	1200 x 900 x 57 mm
measure tolerance	+ 3 mm / - 3 mm
net weight (kg)	3,75 kg
weight tolerance (kg)	+ 0,065 kg / - 0,065 kg
number per pallet	70 pcs
colour	almost all RAL-colours

- EXTRA: CLOSED DECK:**
- Can hold egg liquid - to prevent leakage to the piles of eggs below or to the floor of trucks and buildings.

- EXTRA: OPEN & CLOSED DECK**
- for perfect recognition the dividers can be provided with an inscription strong - durable - long life time

- QUALITY:**
- high quality PPC virgin material provided with UV stabilisation

# EC PROTECTOR

EC Protector secures the top stacks from shoving and bouncing.



# FEATURES

	TRAY	PALLET	DIVIDER
<b>RAL COLOR</b>			
<b>INSCRIPTION</b>			
<b>BIOSECURITY</b>			
<b>RFID CHIP</b>	×		×
<b>PLUG</b>			

## THE NETWORK



● = Production locations EggsCargoSystem®

We collaborate with many agents around the world.  
Please contact us to bring you in contact with them.

Mail to: [sales@gi-ovo.com](mailto:sales@gi-ovo.com) or phone us: 0031 (0) 88 030 89 00

## REUSABLE - RECYCABLE



Giordano Energy, belonging like GI-OVO to the Giordano Group is the group company that ensures the energy production necessary to the associated Italian production site, thereby guaranteeing a more competitive cost. The choice of non-fossil fuel, but rather animal/vegetable fats, is perfectly in line with the environmental sensitivity that characterises the entire Group activity.

The logo for GI-E, featuring a large, stylized 'G' and 'E' in a light grey color, set against a dark green background with a vertical wood-grain texture.

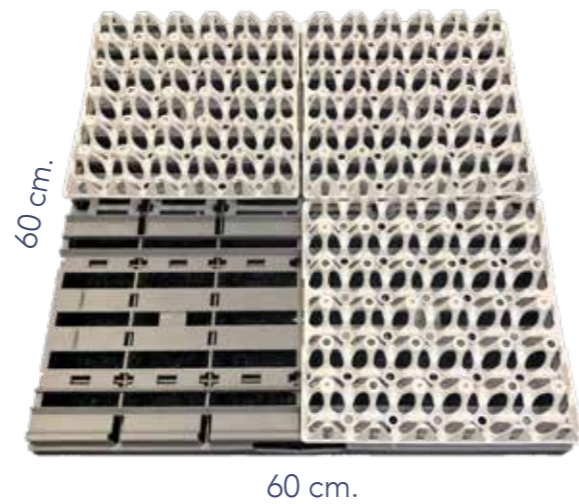
# THE OTHER PRODUCTS

## ECS MINI

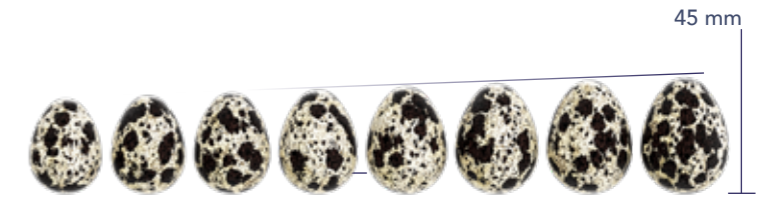
SMALLER FOOTPRINT - SAME ADVANTAGES

SPECIAL FOR:

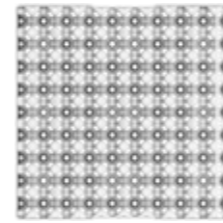
- ✓ Supermarkets
- ✓ Catering services
- ✓ Fast food chains
- ✓ Bakeries
- ✓ Small farmers



## QUAIL EGGS



Egg Tray suitable for Eggs up to 45 mm height and 17,1 gram weight



30x30 cm - 140 gram



72 quail eggs



Perfectly stackable

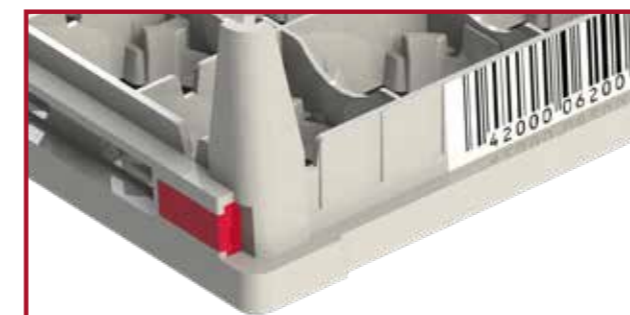


Special crates and pallet for transportation

## HATCHCARGOSYSTEM®



Perfect stackable setter tray for 150 hatching eggs.





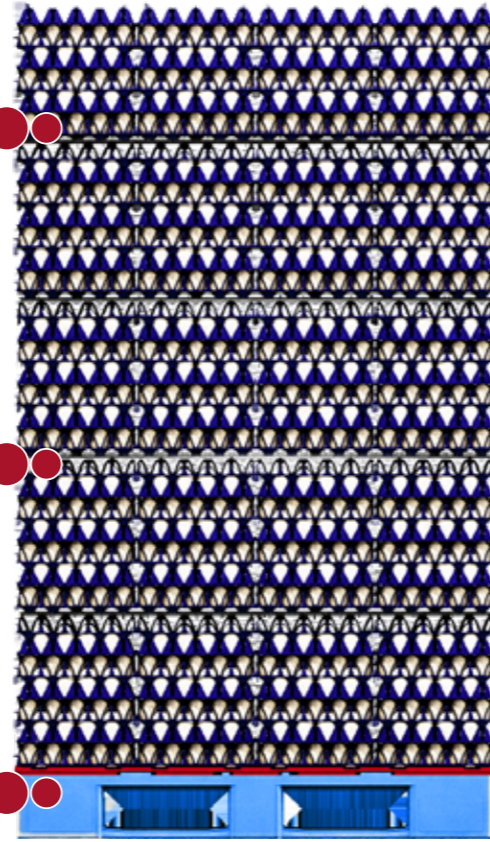
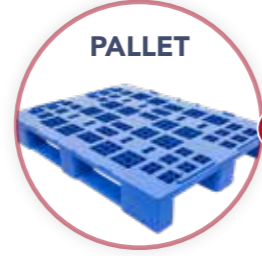
## ECS XL



Special tray for 20 duck/  
turkey eggs. Maximum  
protection.



200 Eggs



## EGGYPLAY EGG BOX AND TOY





## **GI-OVO B.V.**

Anthonie Fokkerstraat 15a  
3772 MP Barneveld  
The Netherlands

### **CONTACT INFO**

Phone no.: +31 (0) 88 – 030 89 00

Fax no.: +31 (0) 88 – 030 89 99

Website: [www.gi-ovo.com](http://www.gi-ovo.com)

E-mail: [sales@gi-ovo.com](mailto:sales@gi-ovo.com)